

The NW SPINNER

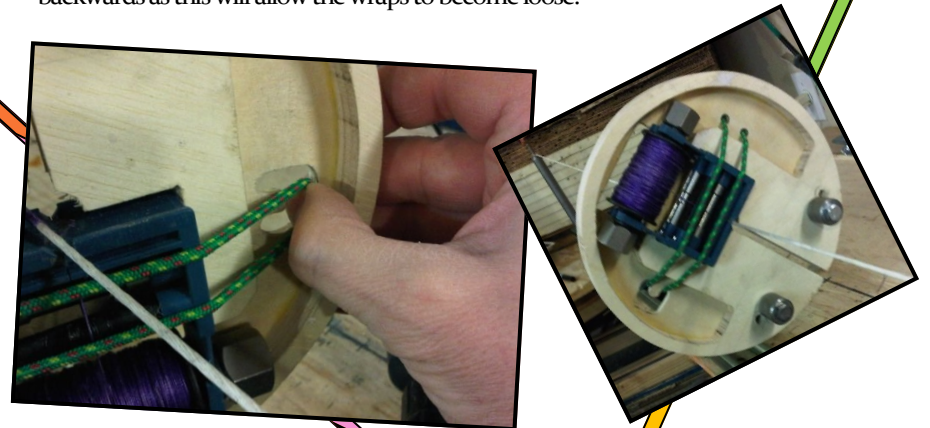
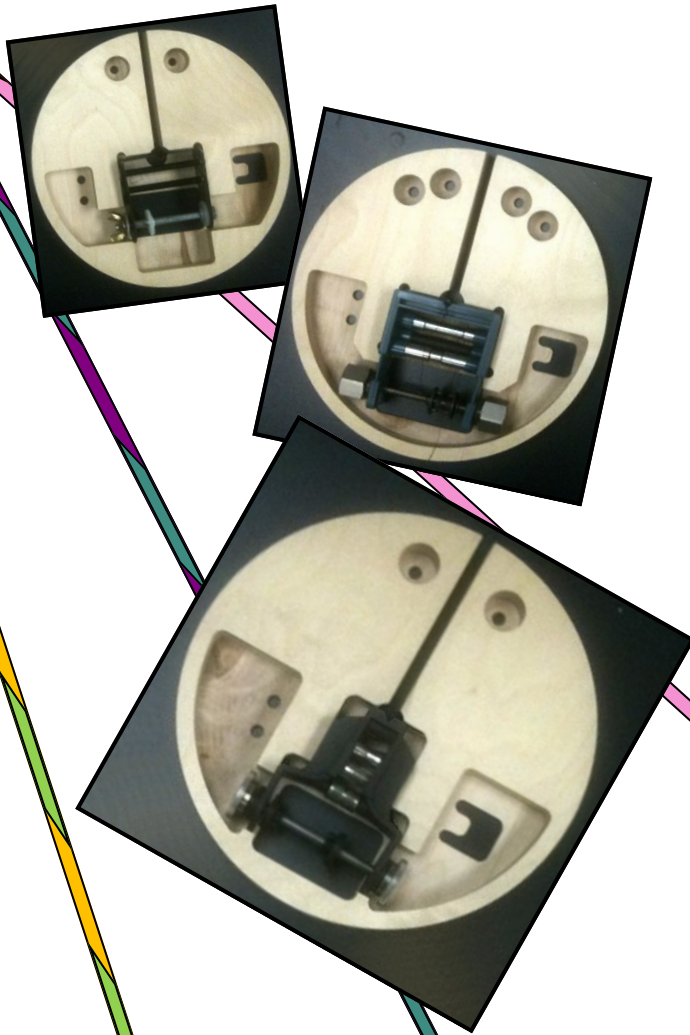
Serving Jig Spinner

Be Safe: Let us take this opportunity to thank you for your purchase of the NW Spinner. We expect it will provide you years of safe and efficient service. Please **always wear eye protection** when operating the NW Spinner. We have not seen any issues with it but we don't want you to be the first. Either. We hope the NW Spinner meets your expectations. Any comments or suggestions would be appreciated. Thanks again for your patronage.

Operating Instructions:

Balance: Ideally when the serving bobbin is in the NW Spinner it should balance at the center line. You can confirm this by placing the center of the loaded Spinner on your index finger and see if it balances. The more off balance the Spinner is, the more the user will experience rotational wobble while winding.

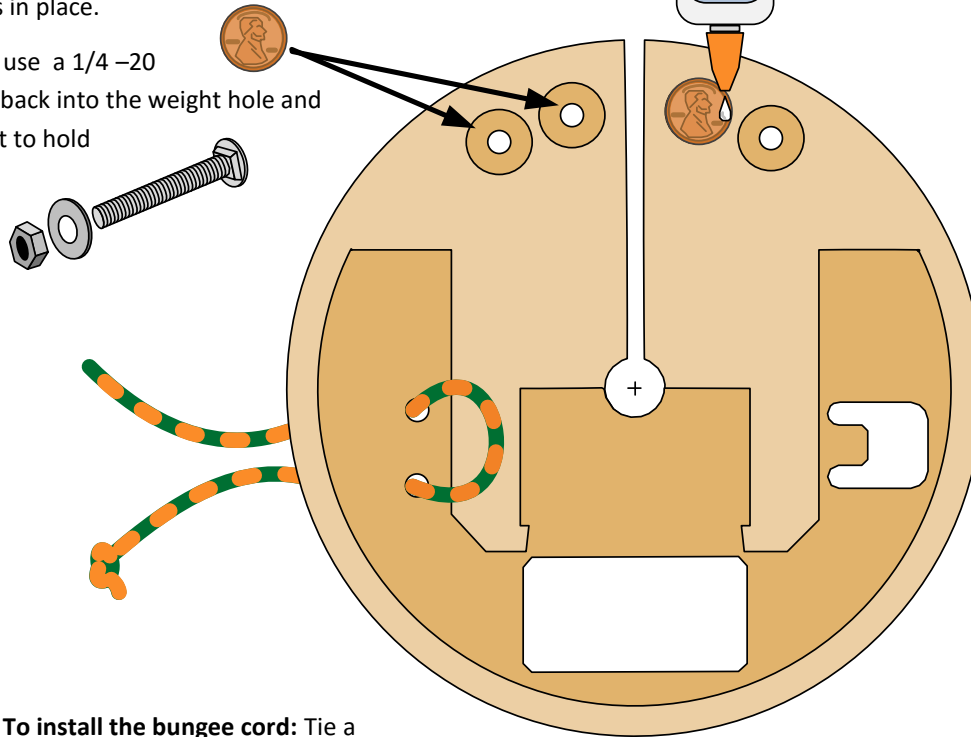
Starting: It is best to get the serving started without the NW Spinner attached to the bobbin. Once the serving is started, simply slide the NW Spinner onto the string and press the Bobbin into the retaining opening. We find the best way to secure the bungee cord is by using your thumb to stretch it across the bobbin. Then push your thumb through the hole with your nail against the retaining clip and let it slip off the end of the thumb and onto the clip. *(See illustration below left)* If you notice a lot of side to side wobble tighten the tension of the bobbin and/or flip the bobbin around and insert the opposite side into the NW Spinner. Also adjusting the number of penny counter weights applied can affect this as well. The illustration on the bottom right is the NW Spinner ready to apply the serving. Simply apply the rubber drill adapter to the outside edge of the NW Spinner and squeeze the trigger. Make sure you watch the process to confirm that the serving wraps are being laid down tight and even. Try not to let the unit spin backwards as this will allow the wraps to become loose.



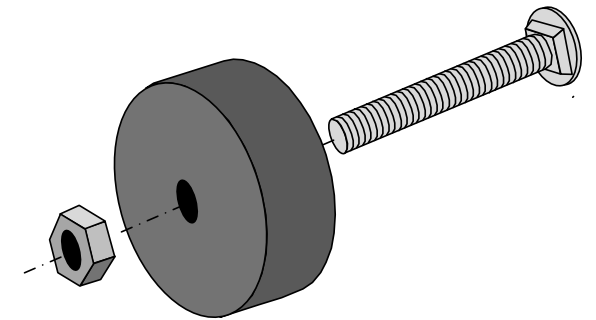
Prepare the NW Spinner for use

Installing the counter weights: The initial plan was to use steel washer but after careful consideration we decided that everyone would have their own pennies and they would be cheaper and easier for the consumer. Shipping extra weights was financially counter productive. So now you actually have a good use for those pennies in your junk drawer and you don't have to pay me to ship them to you. The pennies should press fit in the unit long enough for you to test the balance. After you have added enough pennies to balance the NW spinner to your liking, add a dab of white glue along the inside edge to permanently hold the pennies in place.

An alternate weight system is to use a 1/4 -20
Lace the bolt through from the back into the weight hole and then use the washers . Use a nut to hold them securely in place.



To install the bungee cord: Tie a knot in one end. From the back, lace it through the first hole to the front. Lace it back through the second hole and tie it off on the back side leaving a loop on the front.



Assemble roller as shown

With the Bobbin installed Add and subtract pennies\washers until the NW Spinner balances on your finger. If the balance is off just a little that's ok just make the penny side the heavier side.

